



WITZENBERG NEWS

Municipality • Munisipaliteit • U Masipala Wase

uMasipala onenkathalo owenza amathuba nohlumo kuluntu lwakhe!

Eyomqungu - Eyokwindla 2024



uSodolophu
Cllr Trevor Abrahams

Ezisuka kuSodolophu

Bhotani nonke

U2024 uqale kamnandi! Ibhunga libuyile ekhefeni loSopolitiki, necandelo lezoLawulo sele likulungele ukusa iinkonzo eluntwini. Ngaphandle komlilo wamadlelo osongameleyo, kwiPhondo leNtshona Kapa ngokubanzi, ndizibona ndihleli ngentsula enye kwesisihlalo sokubayintloko yeBhunga. Ndiyaniqinisekisa ukuba sikulungele ukuqubisana nayo yonke imicelimngeni engumqobo endleleni yethu. Ndithi ngxatsho kubo bonke abathe bolula isandla!

Ndingathanda ukunqwenelela bonke abafundi, abafundisintsapho kunye namagosa, unyaka wezifundo onempemelelo. Sithi huntshu kubo bonke abafundi bonyaka ka2023, kwaye sibanqwenelela ikamva eliqhakazileyo. Kwabo bafuna ukuphucula amanqaku kwizifundo zabo yanga bangeza intlelo ezizizo.

Ngokuphetelene nomlilo wamadlelo ongaginyisi mathe kwesiSithili, uMphathiswa weSebe LooRhulumente baseKhaya, okusiNgqongiley kunye neziCwangciso zoPhuhliso eNtshona Kapa u-Anton Bredell uye wadlana indlebe nabasemagunyeni kwiZiko lezoLawulo lwenlekele u-ukuze bamemelele isimo sentlekele kwiPhondo ngenxa yolomlilo yamadlelo kwiPhondo liPhela. Elinyathelo liyakubalikhubalo ekukhawulelaneni nalentsindabada ngokukhawuleza okudibene nokungxama. E nkosi kubo bonke abathe badlala indima, inkxaso kwiingcingi, abasebenzi ngomsebenzi oncomekayo abathe bawenza ingakumbi kwelilixa lokunwenwa kwemililo yamadlelo nakubo bonke abathe bafaka isandla ngokusiliza ngamalizo.

Ndibongoza wonke ubani ukuba azikhusele kweliqondo lobushushu eliphezulu kangaka, ukuba basele amanzi kakhulu bagqale indalo kunye neendawo zamanzi apho kungungelana intlaninge yoluntul.

Sebenzisa amanzi okusela ngobunono uhlabe ukhwelo xa ubona kukho amanzi amoshakalayo oko ukuxela kule nombolo isebenza iyure ezingama 24 kwigumbi loQhakamishelweno likaMasipala kule nombolo: 023 316 2328/9.

Ngokuzimisela nokubamba ucwangco, kunye nokusebenzisana singaphumelela intlaninge yeenkonzo ezibhekiselele kuLuntu lwethu. Silindele okukhulu kwixesha elizayo!

We are experiencing technical difficulties on our telephone lines. Kindly use below numbers for the interim:

24-hr Emergency Control Room:

Line A: 072 851 8294

Line B: 072 852 2362

IINOMBOLO ZEZINGXAMISEKILEYO

UMASIPALA WASEWITZENBERG

023 316 1854 (Iyure zee-Ofisi)

IYURE EZINGAMA-24

IGUMBI LOQHAGAMISHELWANO

023 316 2328/9



AMAPALISA ASE CERES: 023 316 8600/24



TULBAGH: 023 230 8100

AMAPALISA ASEPA-HAMLET: 023 313 3133

WOLSELEY: 023 231 8000



ISIBHEDELELE SASE CERES:

023 316 9600

INQWELO YEZIGULANE:

023 346 6000



ISEBE LOCIMO-MLILO:

023 316 1997/8

112 nokowuphina uNomyayi (cell)

xa ufuna ukuxela okanye unengxaki, isikhazalo kunye noluvo sindwendwele ku:

admin@witzenberg.gov.za

Ngemiba engxamisekileyo sitsalele kulombolo esebenza iiyure ezingama-24 kwiGumbi lika-Masipala loqgagamishelwano.



Abafundi abaphume emagqabini ngo2023 – kwiminyaka emine edlulileyo iqumrhu lenxaso mali labafundi baseWitzenberg lithe lanceda intlaninge yabafundi abazinze kweli laseWitzenberg ukuze bakwazi babenakho ukwenza imfundo enomsila. Kutshanje abafundi bebanga leshumi baye babhiyozela impumelelo yabo apho bekubanjwe indibano ekhethekileyo yokuvuyisana nabo. Lo msitho ububanjelwe eCeres. Usodolophu uTrevor Abrahams, uMlawuli weSekethi uNksz J. Harker weSebe lezeMfundo eNtshona Kapa, kunye noNksk P Dangala owakhe wayingxenyi yabafundi abakhe bawelwa ngumqqa esandleni naye uthe wazimasa lomsitho wokuvuyisana nabafundi bebanga leshumi kambe bonke aba baye baphosa amazwi entumekelo kubafundi, abazali kunye nooTitshala ebabezimase lomsitho. Kuleminyaka idlulileyo lenxaso-mali ithe yanceda abafundi abaninzi ingakumbi abo bebeselungelweni, ezinye zezinto ebathi bazinikwe, imali yokukhwela, ukutya, iincwadi kunye ne(Laptop). Lengxowa yenxaso mali yabafundi(WMF) ibhaliswe ngokusemthethweni njengeQumrhu elingenzi nzuzo kwaye ilawulwa ziNqununu ezichongwe kwizikolo zamabanga aphakamileyo ezisibhozo. Abantu kunye nosomashishini bavumelekile ukuba baphose esivivaneni. Iinkcukacha zeBhanki: FNB Akhawunti yeTshekhi; Igama le-Akhawunti: Witzenberg Matric Fund; Nombolo ye-Akhawunti : 62590819565.

Isilumkiso sikaMasipala neeNdaba

'sithande' ku Facebook





INKULU BAPHATHISWA, OOSODOLOPHU BAYE BANDWENDWELA EKLUITJIESKRAAL NGELOKUHLOLA UMLILO WAMADLELO

Umlilo wamadlelo ugqugqise apha eWitzenberg nakwiSithili seZidiliya ngokubanzi mlilo lowo waqala ngomhla wama 22 kweyoMqungu 2024 ukuzakuthi ga ngoku, uthe watshisa umhlaba olinganiselwa kuma 22000 ha. Kutshanje uSodolophu oxhuzula imikhala eWitzenberg, uCeba uTrevor Abrahams ekhatshwa nguSodolophu weSthili uGqirha Elna von Schlicht, iNkulu baPhathiswa yaseNtshona koloni u-Alan Winde kunye namanye amaqumrhu baye bandwendwela ingqingi ngenjongo yokuhlola ukucinywa komlilo ukuze babenobungqina obunesihlahla.

EliGqiza lithe landwendwela i(ICP) siqhwebela izandla iqela elithe lakwazi ukulawula lentsinda badala, bekwabulela abo bathe baxhasa ngezixhobo zokucima umlilo, namaqela acima umlilo kunye namanye amaqumrhu ngokuzijula ijacu, ekuncedeni uluntu lwethu nawo onke malizo esithe salizwa ngawo.

Nanjengokuba lemililo yamadlelo igqugqisa kuyo yonke iNtshona Koloni, kambe ezona ndawo zichaphazekileyo siSithili sezidiliya, Overberg kunye nenqila i(Cape Metro).

Nangona umlilo unganefuthi elibi kubomi boluntu, kambe nempahla/iindawo kunye nezilwanyana nazo zisemngciphekweni kuba ziyingxenywe yokusingqongileyo. Umzekelo ubushushu ubuphuma emlilweni, bukwalikhubalo kwezinye izityalo nanjengokuba buzanceda ukuba zintshule.

Uluntu kufuneka lugqale into yokuba xa kushushu komile ehlotyeni lonto yenze umlilo unwenwe lula kwaye kubenzima ukuwucima. Umlilo wamadlelo ngumlilo odlange emahlathini nasemadelweni ekungelula ukuwulawula. Imililo emininzi ibangelwa ngabantu kunaleyo eyenzeka ngenxa yeemeko zendalo ezifana nokubaneka.

Ukulumkiswa koluntu phambi kwexesha malunga nemililo kuluncedo ekutheni sikwazi ukuwulawula umlilo ungekanwenwi. Uluntu kufuneka lixele naziphina iimpawu zomlilo nokuba zincinci kangakanani kufuneka batsalele umnxeba kwi-Ofisi yeenkonzo zokucinywa komlilo ku-112 okanye **igumbi loqhakamishelwano likaMasipala 023 316 2328/9.**

Imifanekiso: i(NCC Wildfires) kunye nePhenyane lokucima umlilo ebebexhaswe liCandelo lezeMililo kwiSithili seZidiliya, kunye nentlaninge yabacimi-mlilo bangxashile



UKUMILISELWA KOMGAQO-NKQUBO OLAWULA UKUQOKELELWA KWATYALA KUNYE NOKULAWULWA KWAMATYALA

Xa ucinyelwe umbane okanye uqhawuliwe umbane ezizinto zilandelayo kufuneka uzenze phambi kokuba uphinde uqhakamishelaniswe umbane wakho – Apho umbane wabahlali uthe waqhawulwa okanye wacinywa ezizinto zilandelayo kufuneka zenziwe ukuze uphinde umbane ufakwe:

1. Umnini

1.1 imitha ehlawulwayo:

1.1.1 Ityala lenyanga enye kufuneka lihlawulwe;

1.1.2 Kufuneka kubekho isivumelwano sentlawulo yetyala elishiyekileyo;

1.1.3 Ukuba akukho sivumelwano ityala leenyanga ezimbini kufuneka lihlawuliwe;

1.1.4 Ukuba sikhona isivumelwano,imali osemva ngayo kwesisivumelwano kufuneka ihlawulwe lentlawulo ilinganiselwa kwintlawulo yenyanga ezimbini.

1.1.5 Imitha yombane iyakutshintshwa kufakwe ehlawulwayo xa isivumelwano singafezekiseki.

1.2 Imitha ezihlawulwayo:

1.2.1 Ityala lenyanga enye kufuneka lihlawuliwe;

1.2.2 Isivumelwano sentlawulo osemva ngayo kufuneka sityikityiwe;

1.2.3 Ukuba asikho isivumelwano ityala lenyanga enesiqingatha kufuneka lihlawuliwe;

1.2.4 Ukuba sele sikhona isivumelwano,imali osemva ngayo elinagniselwa kwinyanga enye kufuneka ihlawuliwe kwaye kuzakufakwa nochatha wesigwebo/eyongezelweyo ngokuphathelele nokukhankanywe 1.2.1.

1.2.5 Kuyakuthi kubekho isixa esitsalwayo xa uthenga umbane ingakumbi xa utyala uMasipala esosixa silinganiselwa kumnyinge wama(30%) ekhulwini

2. Abafumana izibonelelo:

2.1 Bona bazakuthi babonelele kumatyala abo ngomnyimnge wama(30%) ekhulwini

2.2 Bona bangatshintshwa bafakwe kwimitha ezihlawulwayo.

Sisonke singawalodidoloza
Amanzi!



I AM RESPONSIBLE...

I PAY FOR MY MUNICIPAL SERVICES

DO THE RIGHT THING – PAY YOUR MUNICIPAL SERVICES

YOUR MUNICIPALITY NEEDS YOUR SUPPORT AS A RESPONSIBLE CITIZEN TO IMPROVE SERVICE DELIVERY.

#PAYINGISCARING

Batho Pele is a belief set that is used to improve service delivery in the public service.

In Sesotho it means "People First", an approach to get public servants committed to serving people and to find ways to improve service delivery.

BATHO PELE PRINCIPLES

- Consultation
- Service Standards
- Access
- Courtesy
- Information
- Openness and transparency
- Redress
- Value for Money

Theme: "Building a Professional Public Service for Inclusive Quality Service Delivery".

Logos for: the dpsa, LEAVENO ONEBEHIND, Batho Pele, 2030 NDP, STRIVE FOR SAFETY, WITZENBERG

THUSONG SERVICES CENTRE

Do you know about Thusong Centres?
They're one-stop shops that bring government services such as grants and other essential applications, closer to the people that need them most.

Logos for: WITZENBERG, home affairs, sassa, social development

023 3155017/21, 023 3485300/11, 023 3158003, 023 3156855 / 023 8142740

Thusong Centre Coordinator
023 315 6240
arrie@witzenberg.gov.za

3 Panorama Rd, Bella Vista, CERES, 6835

* Municipal Cashier on site.

More details: www.westerncape.gov.za/general-publication/thusong-programme

UKONAKALISWA, NOKUBIWA KWEZINTO ZIKAMASIPALA NEZAKHIWO ZOPHUHLISO KUXABISA INTYWENKA YEMALI/ IZIGIDI NGEZIGIDI

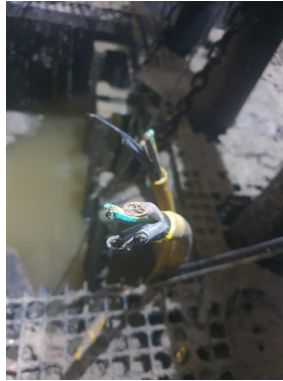
Ubuseka nokubiwa kwezinto zikaMasipala kungumcelimngeni kwaye kuxabisa uMasipala intywenka yemali xa kufuneka zilungisiwe okanye xa kuthengwa ezinye.

Okukubiwa nokonakaliswa kwezakhiwo zophuhliso loluntu kubangela ukuba isabelo mali ebesabelwe iinkonzo zophuhliso sisetyenziswe ekulungiseni nokuthengwa kwezizinto zibiweyo okanye ezithe zonakaliswa kwaye kudobalisa ukuhanjiswa kweenkonzo ezingundoqo. Kwinyanga yoMnga kunyaka ophelileyo kuthe konakaliswa isikhululo samanzi sesine 4 saseCeres kwaye oko kuxabise imali elinganiselwa kuma R750 000. Kunyaka ophelileyo esikhululo sitha saphuculwa ngemali elinganiselwa kwi R.2 yezigidi kuquka nokuphuculwa kwezokhuseleko.



Ukoleka umsundulu, ukuphuculwa kwequla lamanzi afumaneka phantsi komhlaba kwaqukunjelwa kweyoMsintsi kunyaka ka2023 ngenkuntiyula yemali elinganiselwa kwi R1.2 yezigidi, kuquka ukuphuculwa kwezokhuseleko. Nangonakunjalo, amaqula amabini amanzi atsawwa phantsi komhlaba athe nawo onakaliswa oku kwenzeka ngoMvulo, ngomhla we-17 nyakanje kuquka izixhobo ezincedisa ukutsalwa kwamanzi kwesisikhululo. Imali ethe yachithwa iqikelelwa kuma R700 000 eerandi.

Sibongoza bonke abami ukuba baxeke zonke iintshukumo zobuseka nolwaphulo mthetho ingakumbi ukonakaliswa nokubiwa kwezakhiwo zophuhliso zikaMasipala oku ungaxela eMapoliseni okanye kwigumbi likaMasipala loqhakamishelwano elisebenza iyure ezingama 24 kulenombolo: 023 3162328/9.



ISAZISO KWEZEMALI: Bonke abahlali kunye namashishini bayacelwa ukuba bafake ezinye iinkcukacha abazakufunyanwa kuzo xa bengafumaneki, iinkcukacha zonxibelelwano, i-imeyile okanye umnxeba kunye neenombolo ze-akhawunti ezizizo kule-imeyile: account@witzenberg.gov.za as accounts are not delivered on time.

IMITHA ZOMBANE EZINTSHA ZIPHELELWA KUNYAKA KA 2024

Xa ezimitha ziphelelwa lixesha lokuzifaka zonke imitha ezingaphuculwanga ziyakubangela ukuba umnini ndawo lowo angabinambane wokukhanyisa kwaye angakwazi ukusebenzisa i (Token) entsha yokufaka umbane kulonyaka ka2024. Umasipala ukwiphulo lokuhlola zonke ezimitha zombane ezithe zaphuculwa apha eWitzenberg ngokubanzi aqinisekise ukuba ezimitha zisebenza ngendlela eqinisekisa ukuba zonke izinto zime ngobume phambi kokuvalwa kweliphulo kweyDwarha 2024.

Umasipala uqashe inkontilakhi eyaziwa njenge-Ontech ezakuthi indwendwele umzi wakho ukusuka kwinyanga yoMdumba 2024 phakathi evekini ukusuka ngentsimbi yesi-08:00-19:00. Kubalulekile ukuba onke amaGosa xa etyelela emzini wakho ezokuhlola esisixhobo kufuneka aveze isiqinisekiso sokuba ungubani, kwaye uthunywe nguMasipala.

CONTRACT C1116.01

NOTICE OF LANE CLOSURES DUE TO ROAD CONSTRUCTION ALONG R46 - WOLSELEY TO TOUWSRIVIER

Traffic lanes on the R46 between Wolseley and Touwsrivier will be intermittently closed during daytime closures with limited closures during night. Accommodation of traffic is to be carried out by closing off one lane of traffic at a time and accommodating unidirectional traffic on the other lane.

Temporary lane closures as part of the Traffic Accommodation plan have commenced during September 2023 and will most likely continue up until July 2024.

The Western Cape Government is working hard to maintain our roads. Please drive carefully during this period of construction. Let us work together to ensure that our roads are safe. **For You.**



UKUHOLWA KWEENQWELO MAHALA

Isebe leziThuthi laseWitzenberg kunye nesikhululo sokuhlola kweenqwelo banikezela ngeenkonzo zamahala zokuhlola kweenqwelo nanje ngephulo lokhuseleko ezidleleni. Eliphulo lizakuqala ngomhla wama 22 kweyoMqungu nyakanje ,kambe oku kwenziwa ngexesha lomsebenzi.

QAPHELA: eliphulo alizukunika isiqinisekiso sokukhuseleka kweenqwelo yakho kambe kuncediswana nawe, eliphulo elinyanzeliswa. Akunyanzelekanga ukuba wenze idinga.

Ngeenkukacha ezithe vetshe uyacelwa ukuba uqhakamishelane neSebe lezothutho apha eWitzenberg kulenombolo: 023 312 5897.



IMITHA ZOMBANE EZINTSHA ZIPHELELWA KUNYAKA KA 2024

Xa ezimitha ziphelelwa lixesha lokuzifaka zonke imitha ezingaphuculwanga ziyakubangela ukuba umnini ndawo lowo angabinambane wokukhanyisa kwaye angakwazi ukusebenzisa i (Token) entsha yokufaka umbane kulonyaka ka2024. Umasipala ukwiphulo lokuhlola zonke ezimitha zombane ezithe zaphuculwa apha eWitzenberg ngokubanzi aqinisekise ukuba ezimitha zisebenza ngendlela eqinisekisa ukuba zonke izinto zime ngobume phambi kokuvalwa kweliphulo kweyDwarha 2024.

Umasipala uqashe inkontilakhi eyaziwa njenge-Ontech ezakuthi indwendwele umzi wakho ukusuka kwinyanga yoMdumba 2024 phakathi evekini ukusuka ngentsimbi yesi-08:00-19:00. Kubalulekile ukuba onke amaGosa xa etyelela emzini wakho ezokuhlola esisixhobo kufuneka aveze isiqinisekiso sokuba ungubani, kwaye uthunywe nguMasipala.



WITZENBERG
Municipality • Munisipaliteit • UMasipala Wase

AMAQULA OLUNTU OKUDADA!

Azakuvulwa ukuya kwekaTshazimpunzi '24

Indawo eqashisa iindawo iPine Forest eCeres
Abatyelela emini: 08:00 - 19:00

*** Abatyelela emini nabazodada:**
Amangeno yi-R91 umntu ngamnye.
Zonke izithuthi kufuneka zimise ngaphandle

*** Abatyelela Emini:**
Abantu abahlanu yi-R219
(Kufuneka uqhakamishelane nabo emini elingqonkqanyayo)
Abahlali baseWitzenberg kugxela!
(Uphathe i-Akhawunti kaMasipala pesazisi wakho njengesiqinisekiso). Zonke izithuthi kufuneka zimise ngaphandle.

Amaqula oLuntu:
Ngexesha lezihlo: 13:00-18:00

NgeMpelaveki, xa kuvulwe izikolo-kunye noluntu NgeeHolidi: 10:00 - 18:00

E-iland, Bella Vista, PA Hamlet, Montana naseWitzenville

Amangeno
Abantu abadala: **R11**
Abantwana: **R2-50**



UMSEBENZI WOKULUNGISWA KWENDLELA UYAQHUBEKA APHA EWITZENBERG

INOMBOLO YENKONTILAKHI. C1216 – UMSEBENZI OQINGQELWE IXESHA WENDLELA UMR310, DR1458 AND DR1487 PHAKATHI KWASECERES NASE-OP DIE BERG

Urhulumente waseNtshona Koloni wenza umsebenzi omhle kwingingqi yaseWitzenberg yokulungiswa kwendlela eCeres. Lo msebenzi uqale kweyeNkanga 2023 kulindeleke ukuba uqukunjelwe kweyokwindla 2026. Isebe libekele bucala imali elinganiselwa kumaR378 ezi-gidi ukuze kuqukunjelwe lomsebenzi.

Igqwetha uChantal Smith oliBambela Ntloko kwiSebe lezakhiwo zoPhuhliso Loluntu kuRhulumente waseNtshona Koloni uthe “Impumelelo yonxibelelwano lweendlela eNtshona Koloni iyakuhlala iyimpumelelo ngenxa yobuchule bethu ngokugxila kwixesha elimisiweyo nokuqinisekisa ukuba ikhuselekile. “Enye into endenze ndizingombe isifuba kukuba eliphulo lidale amathuba omsebenzi abalelwa kuma 350 kwaye lomsebenzi uqingqelwe ixesha elilinganiselwa kuma 40 000 eentsuku.

Isebe liqinisekisa ukuba eliphulo liyakudala abathuba omsebenzi aluncedo. Umphathiswa weSebe uTertuis Simmers uthe, “Umsebenzi owenziwa ngezandla uhamba phambili kunalowo wenziwa ngemitshini apho kuyimfuneko ukuze kuqinisekiswe ukuba uMthetho ongengqesho yoluntu lwengingqi uyenzeka. Imisebenzi ethe yagqalwa apho kuzakusebenza abantu ngaphandle kwemitshini iquka, ulawulo lwezithuthi, ukungcitywa kwamathanda, ukugudiswa, ukungcitywa, izakhiwo, indledlana zokuhamba abantu, indawo ezifunxa amanzi, izilumkiso zendlela, ukubulawa kwekhula, ukutshentwa kwekhula, ukuhlolwa kwendlela nokuqukunjelwa kwendlela”.

“Urhulumente weNtshona Kapa izijule ijacu ekuphuculeni okusingqongileyo ukuze kubelula ukuhluma kwezoQoqo-sho ngokuphucula izakhiwo zophuhliso kunye nenkontilakhi eziqashwe liSebe. “Okutsala umxhelo kukuba iSebe lizimisele ukusebenzisana neeNkontilakhi zengingqi ezikwixhabathiso 1 or 2CE (iiNjineli zezakhiwo) xeshikweni ebopha amabande apho efuna ukunceda iinkontilakhi ezisakhasayo ezili-12 ukuze bazenze zibentathu kambe zibizwe njenge-5 CE. Olu luxanduva lukaRhulumente wePhondo apho efuna ukuphucula iinkontilakhi ezisakhasayo ukuze kuphuculwe izakhiwo zophuhliso loluntu “Uqukumbele wenjenjalo uMphathiswa Simmers.

Ipapashwe ngoNoondaba: beSebe leNtshona Kapa kwicandelo lezophuhliso lwezakhiwo zoLuntu; Umhla: 31 kweyoMqungu 2024

The purpose of this project is to rehabilitate and maintain sections along MR310, DR1458 and DR1487 between Ceres and Op Die Berg in the Cape Winelands District Municipality of the Western Cape. The boundary of the site includes the following roads:

- MR00310 from km 1.91 to km 57.75.
- DR01458 from km 6.00 to km 10.92.
- DR01487 from km 102.53 to km 102.83.
- DR01487 from km 105.93 to km 123.32

The following is the current envisaged work:

MR00310 km 1.91 to km 12.50

To repair surface and base failures where required, by means of asphalt patches, and to apply an A-E2 asphalt surfacing overlay.

MR00310 km 12.50 to km 20.10

To repair surface and base failures where required, by means of asphalt patches, improve riding quality through skimming and application of scratch coat whereafter applying an A-E2 asphalt surfacing overlay. Through the pass, localised curve widening on the inner curves shall be applied through the use of bitumen stabilised material base and subbase construction. Drainage shall be improved through the Gydo Pass through a retrofitted side drain against the cut face.

MR00310 km 20.10 to km 37.90

To repair surface and base failures where required, by means of asphalt patches, crack sealing, rutfilling and applying a slurry texture seal to the entire extent of the road to be resealed and to seal the road using a 14mm single seal using a bitumen rubber (S-R2) tack coat.

MR00310 km 37.90 to km 50.60

To improve the vertical and horizontal alignment, widen the existing road from 6.6m to 8.6m, rehabilitate the existing pavement through reworking the base as a selected layer, widening the cross section, construction of a new cement stabilised subbase, new base layer and seal with a temporary armour seal followed by a final 14mm single seal using a bitumen rubber (S-R2) tack coat.

MR00310 km 50.60 to km 57.75

To repair surface and base failures where required, by means of asphalt patches, crack sealing, rutfilling, and applying a slurry texture seal to the entire extent of the road to be resealed, and to seal the road using a 14mm single seal using a bitumen rubber (S-R2) tack coat.

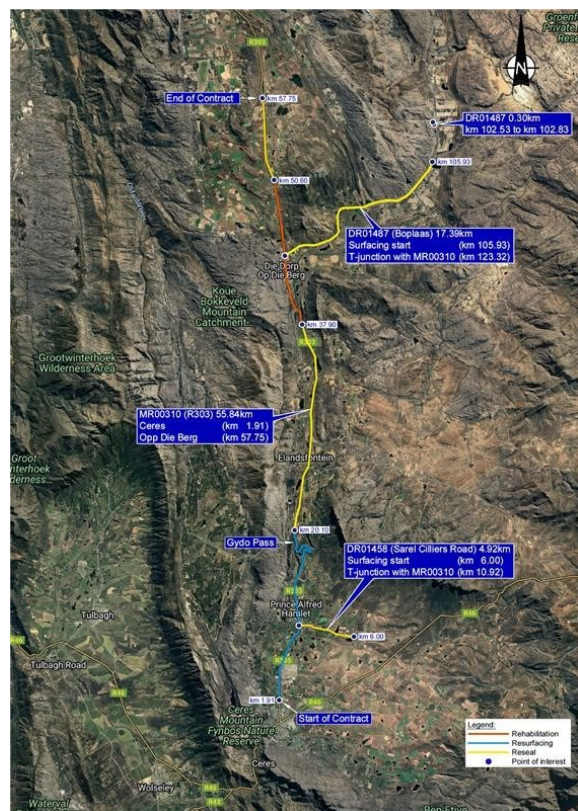
DR01458 km 6.00 to km 10.92

To widen the existing road width from 6.6m to 8.0m through granular materials, repair surface and base failures where required by means of asphalt patches, crack sealing, rutfilling, and applying a slurry

texture seal to the entire extent of the road to be resealed, and to seal the road using a 14mm single seal using a bitumen rubber (S-R2) tack coat.

DR01487 km 102.53 to km 102.83 and km 105.93 to km 123.32

To repair surface and base failures where required, by means of asphalt patches, crack sealing, rutfilling and applying a slurry texture seal to the entire extent of the road to be resealed, and to seal the road using a 10mm single seal using a bitumen rubber (S-R2) tack coat. Rehabilitation of the section of road between km 105.93 to km 107.50 on the right-hand side through in situ recycling of the base layer surfaced with a temporary armour seal followed by a final 10mm single seal using a bitumen rubber (S-R2) tack coat.



IBHUNGA LIKAMASIPALA — 2023 - 2026

SOMLOMO



Cllr Elizabeth Sidogo
Somlomo
WARD 11 (DA)



Cllr Trevor Abrahams
uSodolophu
(DA)



Cllr Gert Laban
Sekela Sodolophu &
Mayco: Eronwakhivo
PR (WA)



Alderman Karriem Adams
Mayco: Imiba Yezindlu
iWADI 6 (DA)



Alderman Hendrik Smit
Mayco: Iinkonzo Zobuthule
iWADI 5 (DA)



Cllr John Fredericks
Mayco: Iinkonzo
Zolawulo Nezemali
PR (VF+)



Cllr Patric Daniels
Mayco: LED & Uyelelo
iWADI 2 (DA)



Cllr Lea Hardnek
MPAC, PR (WP)

IKOMITIKASODOLOPHU

OOCEBA BENGINGQI



Cllr Andile Gili
iWADI 1 (ANC)



Cllr Dirk Swart
iWADI 3 (DA)



Alderman Ronald Visagie
iWADI 4 (DA)



Cllr Jacob Zalie
iWADI 7 (ANC)



Cllr Gwen Franse
iWADI 8 (DA)



Cllr Mxolisi Ndaba
iWADI 9 (ANC)



Cllr Sophia de Bruin
iWADI 10 (DA)



Cllr Khanyiso Yisa
iWADI 12 (ANC)

OOCEBA BOMBUTHO



Cllr Warrick Alexander
PR (PA)



Cllr Jonathan Nel
PR (ICOSA)



Cllr Johammer Mouton
PR (ANC)



Cllr Isak Swartz
PR (EFF)



Cllr Katriena Robyn
PR (GOOD)



Cllr Nonzame Phatsoane
PR (ANC)



Cllr Noluthando Ngcinisa
PR (ANC)



Pilot Project kick off in Ceres in January 2024



To **get you started**, we will be **issuing clear recycling bags** to households, **free of charge!**

All you need to do is **fill the bag with recyclable waste**, and **set the filled bag out for collection, on the same day as your black bag waste.**
 (see schedule at the back)

In exchange, you will receive another clear bag, free of charge to fill again. Our recycling collection service will be rolled out, in phases, into all towns. **Check our website / Facebook page for more details.**

I CAN RECYCLE

- Paper, newspaper and cardboard
- Tins and cans
- Plastics
- Tetrapak
- Glass



I CAN'T RECYCLE

- Wet or dirty paper and cardboard
- Adhesive and laminated paper
- Dog/cat food bags
- Cling wrap
- Plastic food containers
- Disposable nappies
- Fluorescent lights
- Hazardous and medical waste
- Organic waste
- Oil
- Batteries



**REDUCE
REUSE
RECYCLE**

PLEASE NOTE: All bottles to be emptied and bottle caps separated. Flatten cardboard boxes and place next to clear recycle bag. Scrape clean all yoghurt, tins, sauce containers before disposal.



ISAZISO SOLUNTU:

Ubaluleko lokuphuculwa kweemitha ezihlawulelwayo zamanzi i(TID Rollover)

Uyacelwa ukuba uqaphele imitha zamanzi esizisebenziyo ngoku zizakuphelelwa ngonyaka ka2024, nayiphi na imitha engaphuculwanga ayizukwazi ukuthenga umbane oko kuzakubangela ukuba abahlali bangabina mbane kambe abazukwazi ukuthenga lombane umtsha uzakusetyenziswa.

Umasipala waseWitzenberg uzakuqinisekisa ukuba wonke ubani usebenzisa lemitha intsha atshintshwe neenombolo zeemitha ukuze zihambelane nalemitha yombane intsha oku kuzakwenzeka phambi kwenyanga yeDwarha 2024.

Niyacelwa ukuba nivumele amaGosa kaMasipala azakuza emizini yenu ngenjongo yokuzakuphucula ezimitha zombane. Niyacelwa ukuba nibavumele kweziYure, iyure zomsebenzi nakwiYure ezongezelweyo emveni kwexesha lomsebenzi.

I (TID) UKUPHUCULWA KWEMITHA ZOMBANE OHLAWULWAYO – IMIBUZO EHLALA IBUZWA?

Yintoni i(TID)? TID sisixhobo esisetyenziswa ukubona ukuba uthenge umbane wamalini kwaye sona sijonga kwi(Token) leyo uyithenge kwindawo ethengisa umbane. Le siyisebenzisayo yona iyaphelewa

kambe yaqala ukusebenza ngonyaka ka1993.

Izakuba namthelela mni kwimitha yam?

Zonke imitha ezihlawulwayo kufuneka zifakelwe i(KCT) ezakuthi iphucule indlela ezakusebenza ngayo imitha yakho. Oku kufuneka kuqunjelwe kweyeNkanga 2024 imitha ezingafakelwanga esisixhobo azisayi kwamnkeleka xa ubani ethenga umbane.

Yintoni emayenziwe?

Esisixhobo kufuneka sifakwe kwimitha ukuze ikwazi ukusebenza.

Ingaba kuzakufuneka itshintshwe imitha?

Okokuqala kufuneka kutshintshwe indlela esebenza ngayo ngokuthi kufakwe esisixhobo(Token) ukuba esisixhobo asingeni koko kuzakunyanzeleka ukuba imitha itshintshwe.

Kwenzeka ntoni xa sele ndiyithengile le(Token) ntonje ndingayisebenzisanga?


iToken kufuneka zifakwe kwimitha phambi kwexesha lokuba iphuculwe.

Ingaba umbane ebesele ndiwuthengile uzakucima?

Hayi – Le nqkubo ayizikubanafuthe kumbane ubusele uwuthengile.

Ingaba ikhona ingxaki malunga noku?

Ewe. Ukuba esisixhobo(Token) ayifakwanga phambi kweyeNkanga 2024 imitha yakho ayizukwamnkeleka kwiindawo ezithengisa umbane/awuzukwazi ukuthenga umbane.




WITZENBERG TOURISM
ceres • tulbagh • wolseley

www.visitwittenberg.co.za



ceres
— pure adventure

CERES TOURISM BUREAU
Tel. 023 316 1287
Fax. 086 505 0455
E-mail: info@ceres.org.za
Website: www.ceres.org.za
GPS Coordinates:
33°21' 0.00"S 19°18' 0.00"E
CERES via Michell's Pass,
± One and a half hours.



Tulbagh
VALLEY OF ABUNDANCE

TULBAGH TOURISM BUREAU
Tel. 023 230 1375
Tel./Fax. 023 230 1348
E-mail: admin@tulbaghtourism.co.za
Website: www.tulbaghtourism.co.za
www.tulbaghwineroute.com
GPS Coordinates:
33°17' 18.5" 19°08' 18.6"E
TULBAGH via Nuwekloof Pass,
± One and a quarter hours.



WOLSELEY
EXPLORE • TASTE • STAY

WOLSELEY TOURISM BUREAU
E-mail: info@wolseleytourism.co.za
Website: www.wolseleytourism.co.za
GPS Coordinates:
33°25' 0"S 19°12' 0"E
WOLSELEY via Bainskloof Pass
or Du Toitskloof Pass,
± One hour and twenty minutes.

AMAXESHA WOKUTHUTHWA KWENKUNKUMA '24

JANUARY							FEBRUARY							MARCH							APRIL						
M	T	W	T	F	S	S	M	T	W	T	F	S	S	M	T	W	T	F	S	S	M	T	W	T	F	S	S
1	2	3	4	5	6	7	5	6	7	8	9	10	11	4	5	6	7	8	9	10	1	2	3	4	5	6	7
8	9	10	11	12	13	14	12	13	14	15	16	17	18	11	12	13	14	15	16	17	8	9	10	11	12	13	14
15	16	17	18	19	20	21	19	20	21	22	23	24	25	18	19	20	21	22	23	24	15	16	17	18	19	20	21
22	23	24	25	26	27	28	26	27	28	29	25	26	27	28	29	30	31	22	23	24	25	26	27	28			
29	30	31												29	30	29	30										

MAY							JUNE							JULY							AUGUST						
M	T	W	T	F	S	S	M	T	W	T	F	S	S	M	T	W	T	F	S	S	M	T	W	T	F	S	S
6	7	8	9	10	11	12	3	4	5	6	7	8	9	1	2	3	4	5	6	7	5	6	7	8	9	10	11
13	14	15	16	17	18	19	10	11	12	13	14	15	16	8	9	10	11	12	13	14	12	13	14	15	16	17	18
20	21	22	23	24	25	26	17	18	19	20	21	22	23	15	16	17	18	19	20	21	19	20	21	22	23	24	25
27	28	29	30	31	24	25	26	27	28	29	30	22	23	24	25	26	27	28	26	27	28	29	30	31			

SEPTEMBER							OCTOBER							NOVEMBER							DECEMBER						
M	T	W	T	F	S	S	M	T	W	T	F	S	S	M	T	W	T	F	S	S	M	T	W	T	F	S	S
2	3	4	5	6	7	8	7	8	9	10	11	12	13	4	5	6	7	8	9	10	2	3	4	5	6	7	8
9	10	11	12	13	14	15	14	15	16	17	18	19	20	11	12	13	14	15	16	17	9	10	11	12	13	14	15
16	17	18	19	20	21	22	21	22	23	24	25	26	27	18	19	20	21	22	23	24	16	17	18	19	20	21	22
23	24	25	26	27	28	29	28	29	30	31	25	26	27	28	29	30	23	24	25	26	27	28	29				
30														30	31	30	31										

MONDAY	TUESDAY	WEDNESDAY	THURSDAY	FRIDAY
CERES INCLUDING RETIEF STREET INDUSTRIAL ZONE, OOSTERLIG AND ALL BUSINESSES	BELLA VISTA INCLUDING SKOONVLEI INDUSTRIAL ZONE, NDULI AND ALL BUSINESSES	TULBAGH AREA INCLUDING ALL BUSINESSES, CHRIS HANI AND INFORMAL SETTLEMENTS ONLY ON A WEDNESDAY	WOLSELEY AND OP – DIE – BERG AREAS INCLUDING ALL BUSINESSES	PA HAMLET TOWN, WATERVAL AREA AND SWANEBERG PARK, INCLUDING ALL BUSINESSES

■ PUBLIC HOLIDAY

We now have our own **Ceres Material Recovery Facility (MRF)** commonly referred to as a **M(u)RF**.
Should you prefer to drop off your recyclables at the MRF, you may drop it, free of charge.
Please provide your municipal account details, and you will be granted a **discount** according to the approved Council Tariff, for every filled bag (15L) of recyclables that you drop off.

